




ADA TRANSITION PLAN brief background

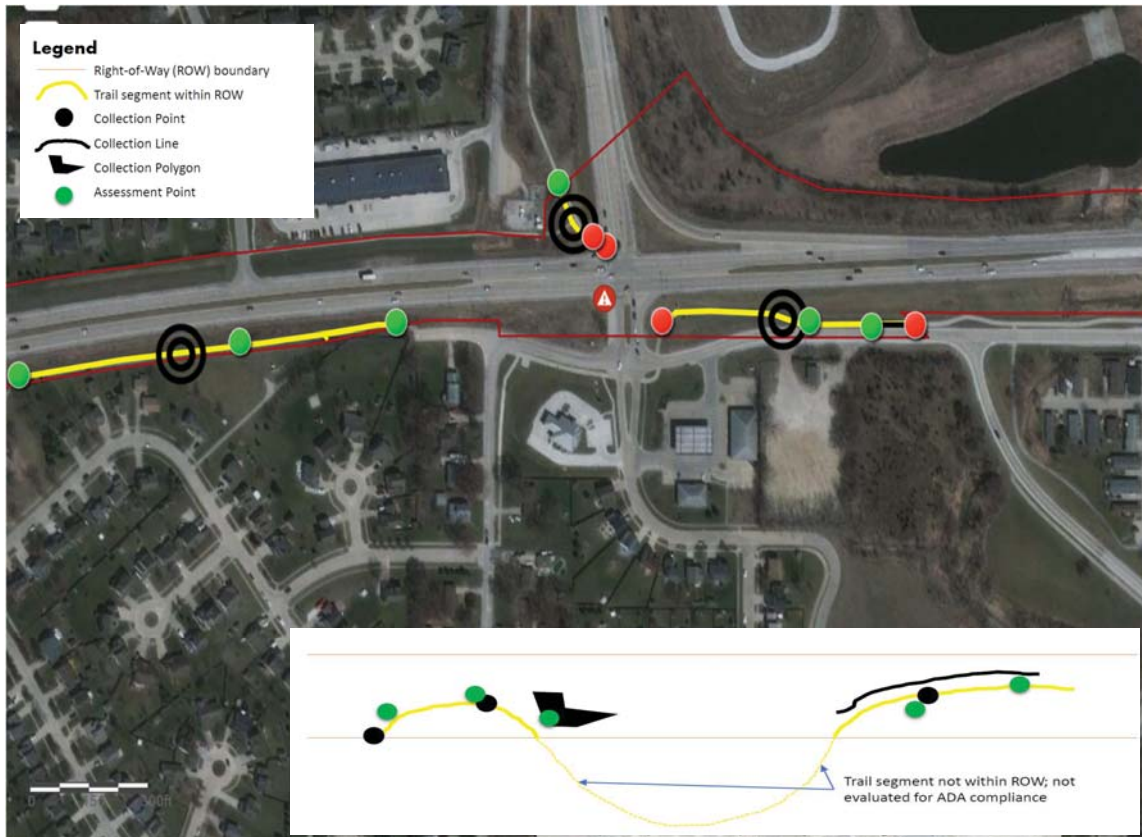
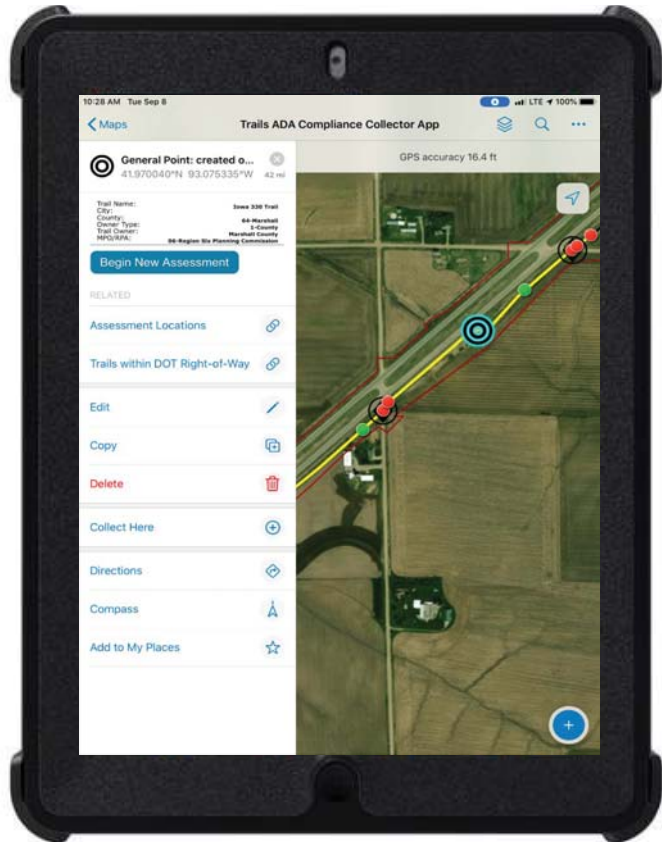
- Iowa DOT Transition Plan was focused on sidewalks.
- FHWA – Iowa Division emphasized that ADA compliance is more than just sidewalks, it is everything within DOT’s ROW.
 - FACILITIES: information collected in 2017.
 - BUS STOPS: Bus stop ADA Compliance Assessment information collected in 2018.
 - TRAILS: started collecting information Summer of 2020, finalize in 2021.
 - PARK & RIDE/TRAILHEADS: anticipate collecting in 2021.

IOWA DOT
TRAILS ADA COMPLIANCE APP

COLLECTOR FOR ARCGIS 
 Trails within DOT right-of-way
 Collection Points, Lines, and Polygons

SURVEY123 FOR ARCGIS 
 Completing and submitting assessments

OTTERBOX/IPAD 
 Protective case
 Hand strap
 Cellular plan



Survey123 for ArcGIS

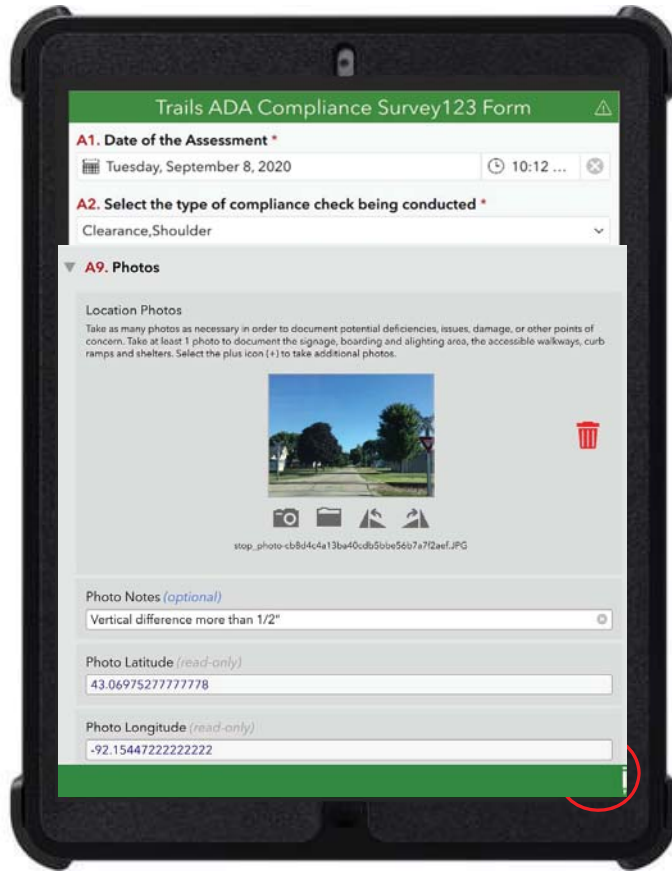
Some of the information is prepopulated in Survey123.

16 Sections

- Assessment information
- Location information
- Clearance
- Shoulder
- Ramps, Signage
- Amenities

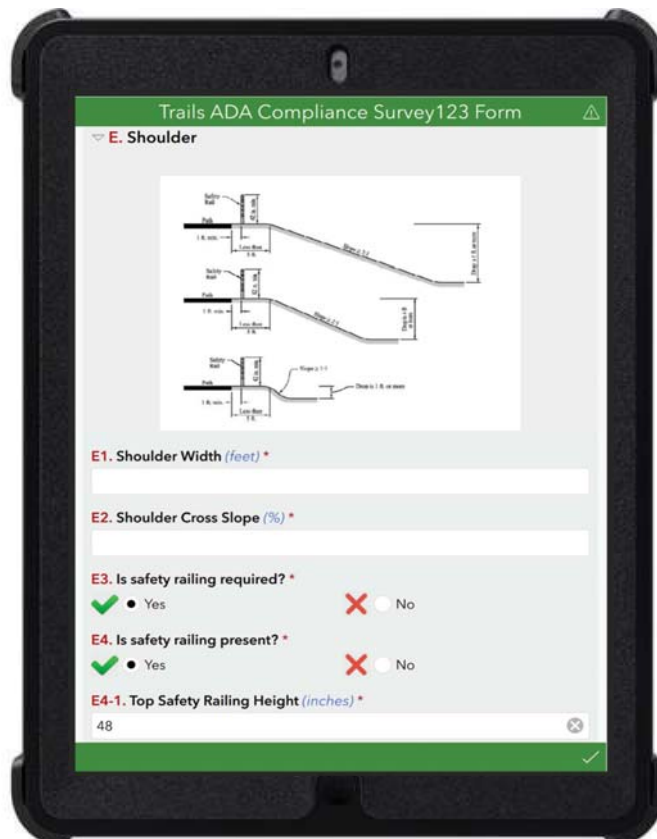
Photos

- Document deficiencies/location
- No limit to number of photos
- Automatically pulls GPS latitude/longitude coordinates for each individual photograph



Survey123 for ArcGIS

- ▶ Minimize/streamline User Interface
 - Domain pick-lists, reducing manual data entry
 - Condition-based questions, reducing unnecessary questions
 - References from federal guidance
 - Official visuals
 - Regulation references

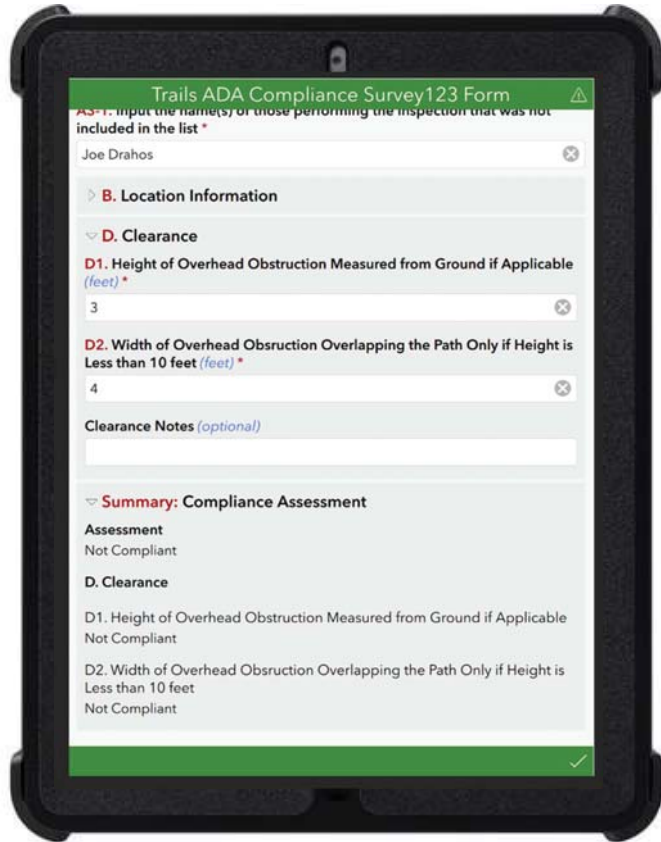




ASSESSMENT

Survey123 for ArcGIS

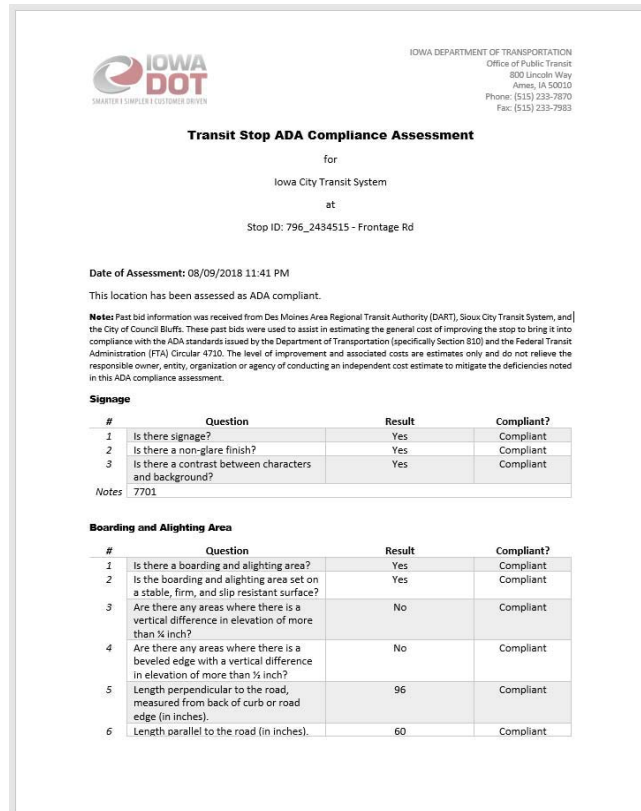
- ▶ Summary
 - Objective assessment
 - Estimated costs
 - Some costs would be automatically calculated, others manually
 - List of deficiencies
- Field collector override
 - Agree or disagree
 - New cost estimate



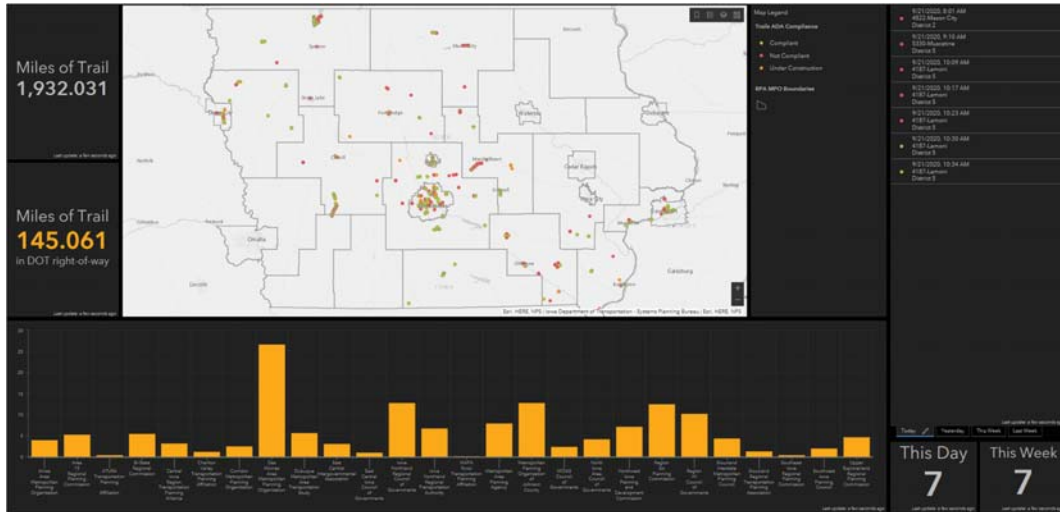
REPORTING

Survey123 for ArcGIS

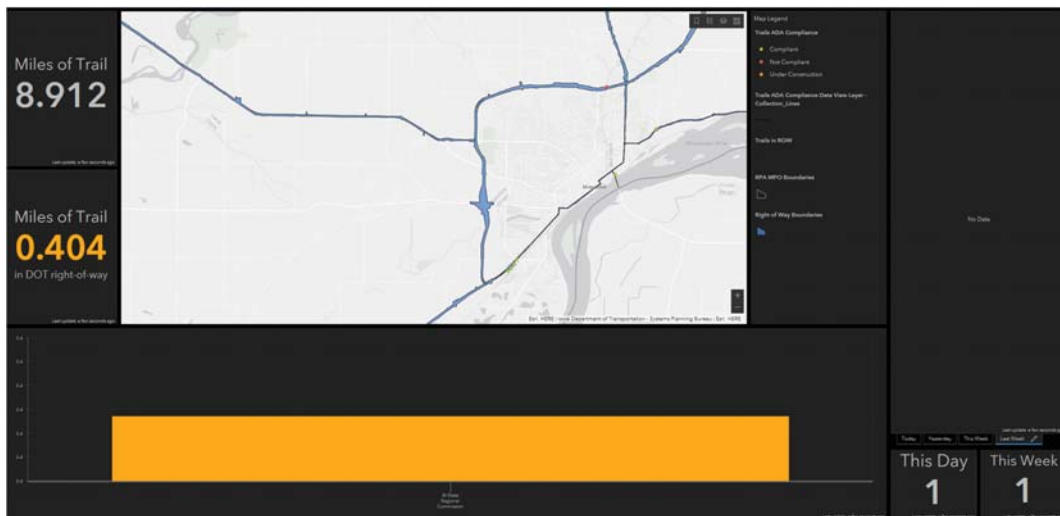
- ▶ Report template
 - ▶ Word document
- ▶ Report Output
 - ▶ Batch export .pdfs
 - ▶ Can filter by area or attribute
 - ▶ Populated with data
 - ▶ Includes all photos
- ▶ Findings were shared with local public transit agencies



ADA TRANSITION PLAN Dashboard



ADA TRANSITION PLAN Dashboard





ADA TRANSITION PLAN

Next steps

1. Assessments expected to be completed in Summer 2021.
2. Include findings in ADA Transition Plan Update.
3. Include **trail owners in the planning stages** of any state project traversing through an urban area.
4. Ensuring **design and specification manuals** used by engineers and contractors in the state include up-to-date ADA-compliant guidance.
5. Hold discussions with trail owners **about improving facilities found to be deficient by ADA standards** on a schedule agreeable to all involved.
6. Ensuring cities and counties are knowledgeable about the need to obtain a **work in right-of-way permit** before building facilities along a state route.
 - This permit includes a disclaimer that **any work must comply with federal and state laws**, which would include the ADA.



ADA TRANSITION PLAN



Questions?