


# Iowa Public Transit Long Range Plan

Iowa Department of Transportation

## MPO/RPA Joint Quarterly Meeting – Ames, IA

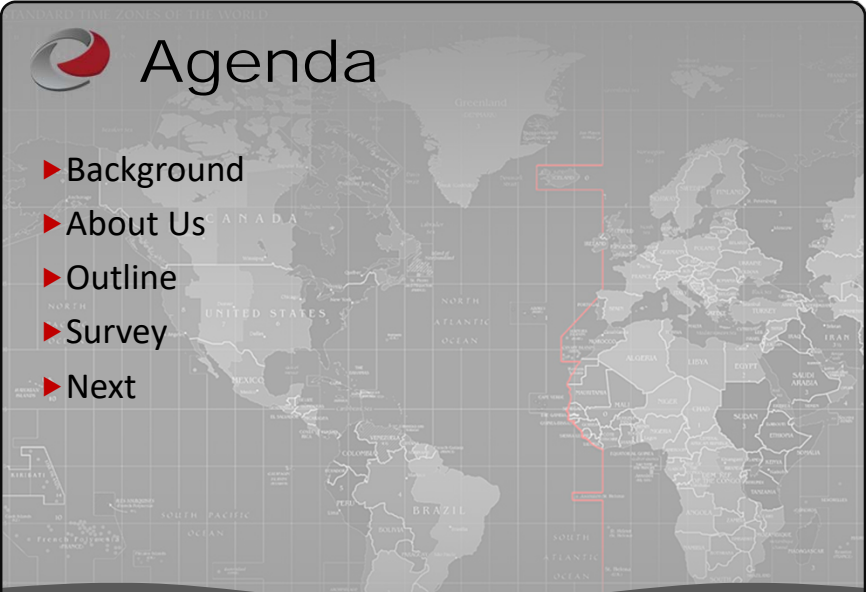
27 March, 2019

Presented by: Joe Drahos, Passenger Planner




SMARTER | SIMPLER | CUSTOMER DRIVEN

Contact Us:  
P. 515.239.1771 / [joseph.drahos@iowadot.us](mailto:joseph.drahos@iowadot.us)



# Agenda

- ▶ Background
- ▶ About Us
- ▶ Outline
- ▶ Survey
- ▶ Next




SMARTER | SIMPLER | CUSTOMER DRIVEN

Contact Us:  
P. 515.239.1771 / [joseph.drahos@iowadot.us](mailto:joseph.drahos@iowadot.us)





# Background

- ▶ **Previous planning efforts**
  - ▶ (1999) Iowa In Motion Transit Plan
  - ▶ (2009) Iowa Statewide Passenger Transportation Funding Study
  - ▶ (2014) Iowa Park and Ride System Plan
  - ▶ (2018) Iowa Transit Asset Management Group Plan
- ▶ **Objectives**
  - ▶ Efficiently plan and manage resources for an effective statewide public transit system
  - ▶ To publish an updated, thorough and effective plan that serves the needs of riders and transit agencies across the state



SMARTER | SIMPLER | CUSTOMER DRIVEN

**CONTACT US:**  
P. 515.239.1771 / joseph.drahos@iowadot.us

# About Us

**Office of Public Transit**

**Office of Systems Planning Planning Team**

Working Group

**Internal Stakeholders**  
Office of Public Transit  
Office of Rail Transportation  
Office of Aviation  
Office of Systems Planning  
Office of Location & Environment  
Office of Driver & Identification Services  
District Planners


**External Stakeholders**  
IPTA (Iowa Public Transit Association)  
PTAC (Public Transit Advisory Council)  
ITCC (Iowa Transportation Coordination Council)  
Transit Agencies

Steering Committee




SMARTER | SIMPLER | CUSTOMER DRIVEN

**CONTACT US:**  
P. 515.239.1771 / joseph.drahos@iowadot.us




# Outline

- ▶ **Planning Horizon: 2020 – 2050**
- ▶ **Begin**
  - ▶ December 2018
- ▶ **Benchmarks**
  - ▶ Data analysis by summer of 2019
  - ▶ Strategies by fall of 2019
  - ▶ Final draft by winter of 2020
- ▶ **Complete**
  - ▶ March 2020
  - ▶ Coincide with update of State Long Range Transportation Plan



**IOWA DOT**  
SMARTER | SIMPLER | CUSTOMER DRIVEN

Contact Us:  
P. 515.239.1771 / joseph.drahos@iowadot.us



# Outline

Ch. 1 - Introduction	
1.1. Introduction & background	
1.1.1. What is Public Transit?	
1.1.2. Public Transit Challenges Iowa Faces	
1.2. Previous Iowa Passenger and Transit Planning efforts	
1.2.1. Iowa In Motion Transit System Plan (1999)	
1.2.2. Iowa Statewide Passenger Transportation Funding Study (2009)	
1.2.3. Iowa Park and Ride System Plan (2014)	
1.2.4. Iowa In Motion 2045 State Transportation Plan (2017)	
1.2.5. Iowa Transit Asset Management Group Plan (2018)	
1.3. How this plan was developed	
1.3.1. Internal stakeholders	
1.3.2. Interagency and external stakeholder consultation	
1.3.3. Public input	
1.4. How the Plan is used	

Ch. 2 - Iowa's Transit Context	
2.1. Sociodemographic Characteristics	
2.2. System and Travel Characteristics	
2.2.1. Public Transit	
2.2.2. Other Passenger Travel Options	
2.2.2.1. Rail	
2.2.2.2. Aviation	
2.2.2.3. Transportation Network Companies (TNC)	
2.2.2.4. Autonomous Vehicles (AV)	
2.2.2.5. Shared Systems (Bike, Scooter, etc.)	

**IOWA DOT**  
SMARTER | SIMPLER | CUSTOMER DRIVEN

Contact Us:  
P. 515.239.1771 / joseph.drahos@iowadot.us

# Outline


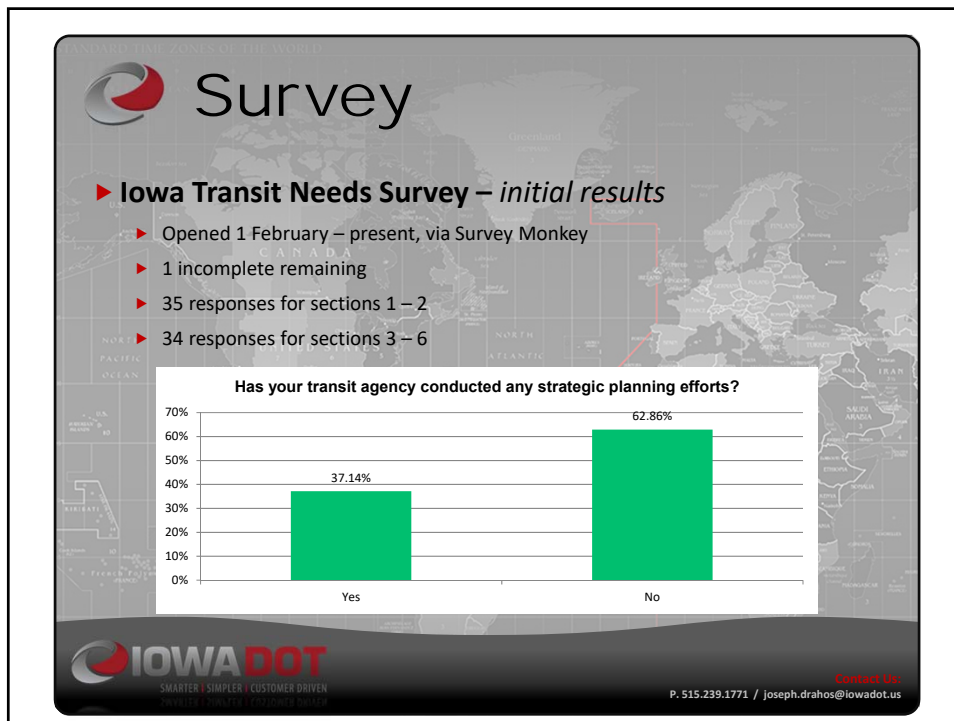
Ch. 3 - Needs and Strategies	
3.1. Needs assessment and gap analysis	
3.1.1. Service	
3.1.2. Fleet	
3.1.3. Facility	
3.1.4. Personnel	
3.1.5. Technology	
3.2. Stakeholder input concerning needs	
3.3. Strategies	
3.3.1. Strategies identification and development	
3.3.2. Iowa's Transit Strategies	
3.3.3. Prioritization of Iowa's Transit Solutions	

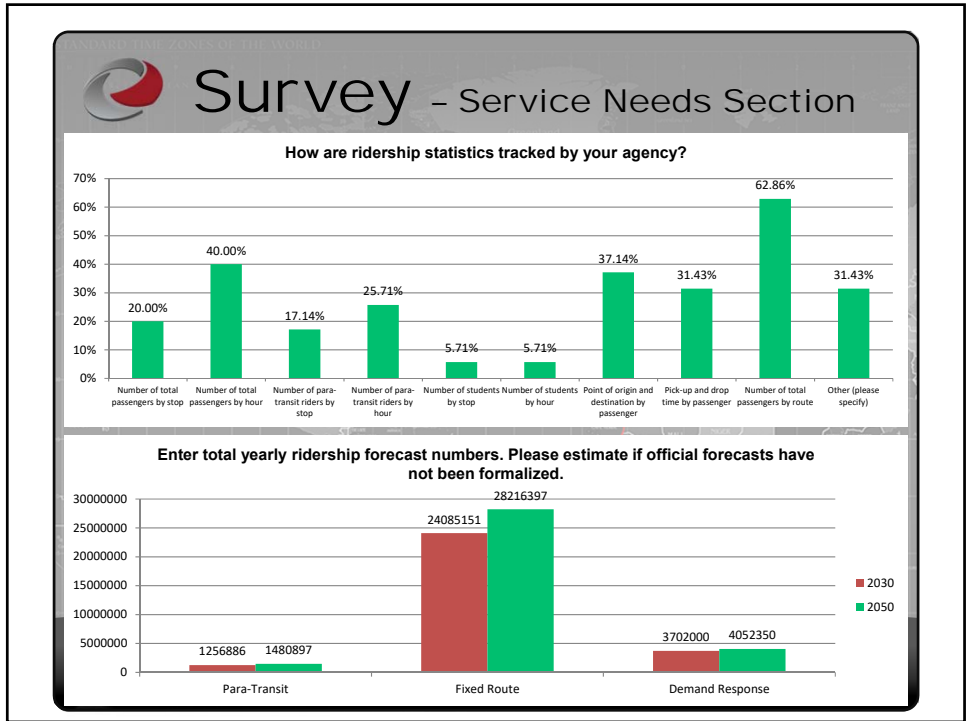
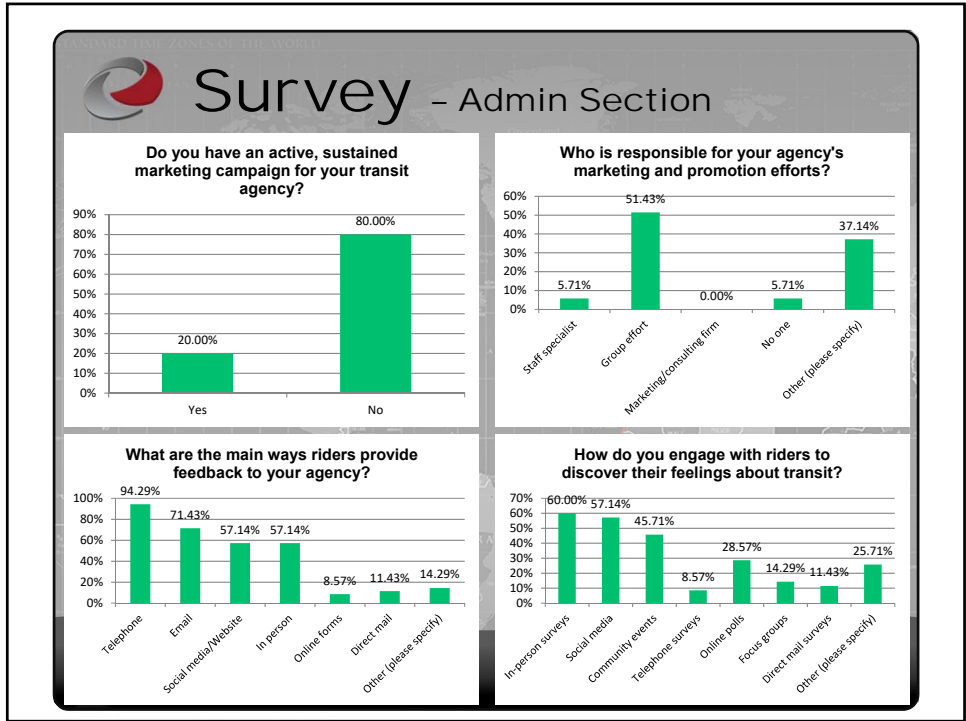
  

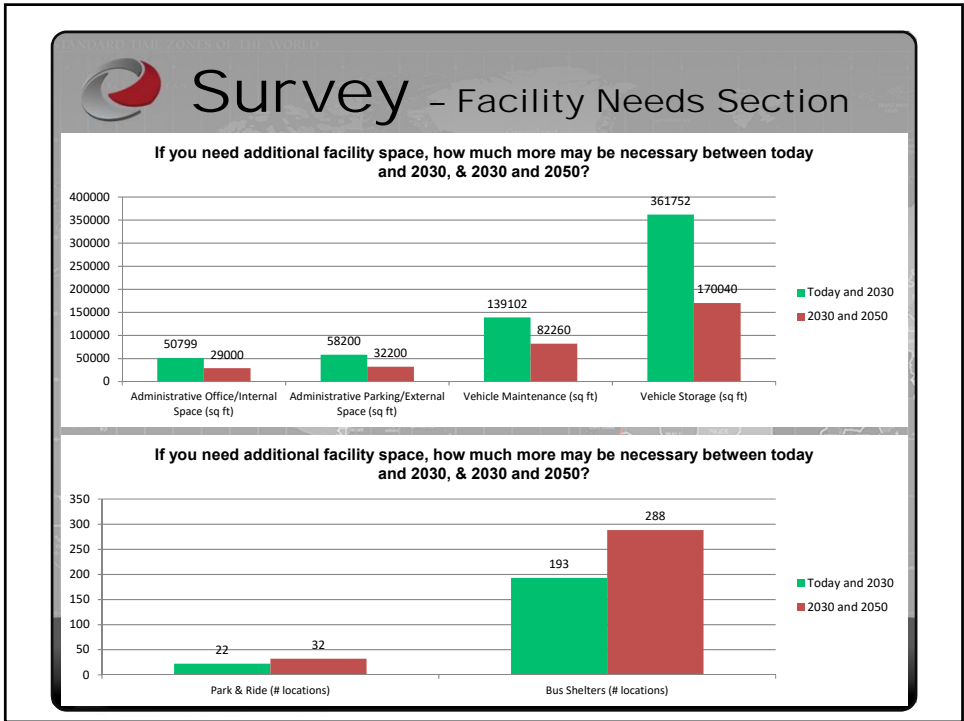
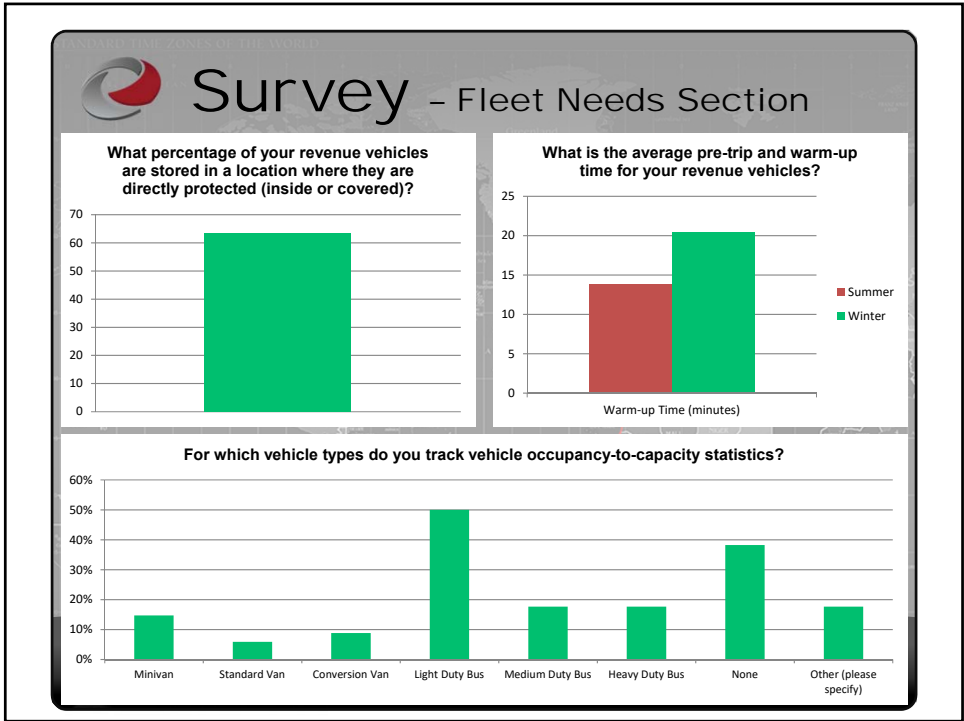
Ch. 4 - Financing	
4.1. What are the anticipated costs?	
4.2. What is the expected revenue?	
4.3. What are the shortfalls?	
4.4. Additional funding sources and investment scenarios	
4.5. What is Return-on-Investment (RoI)?	

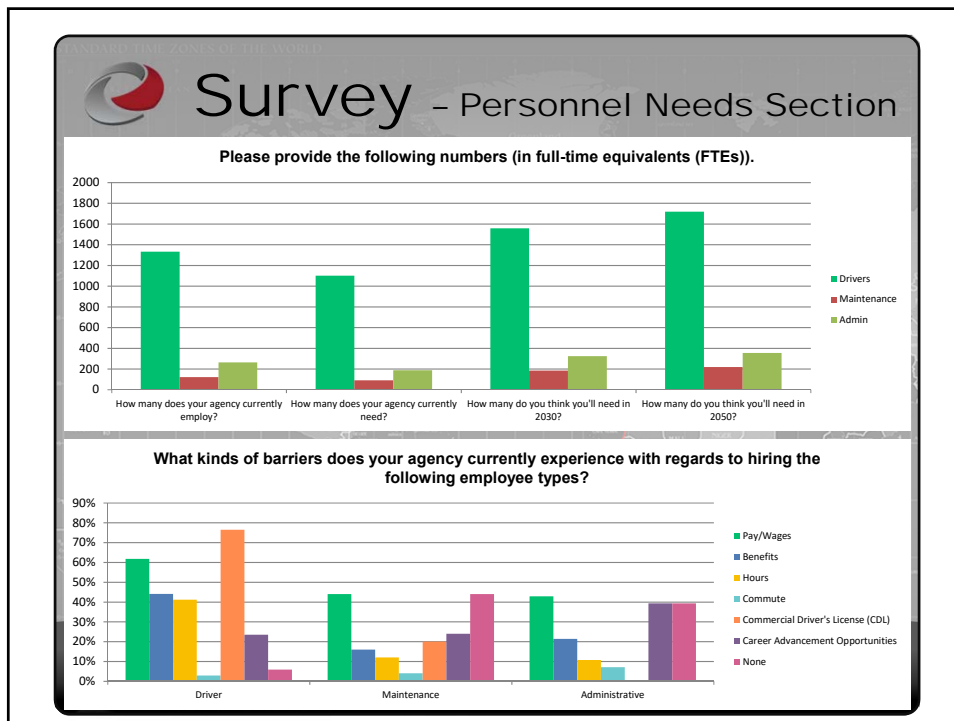
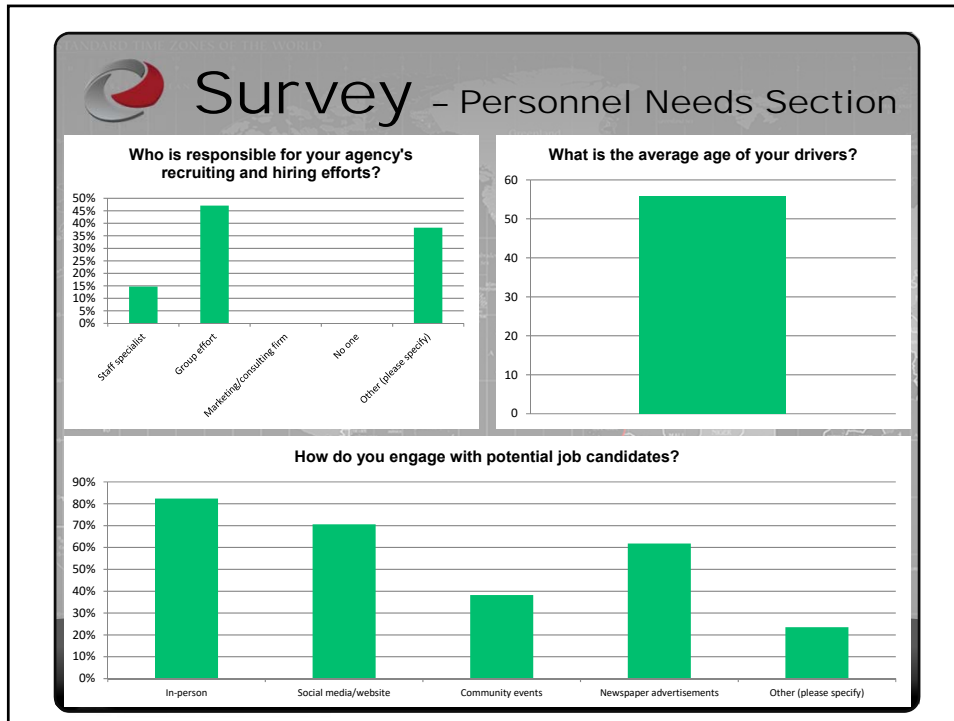
  

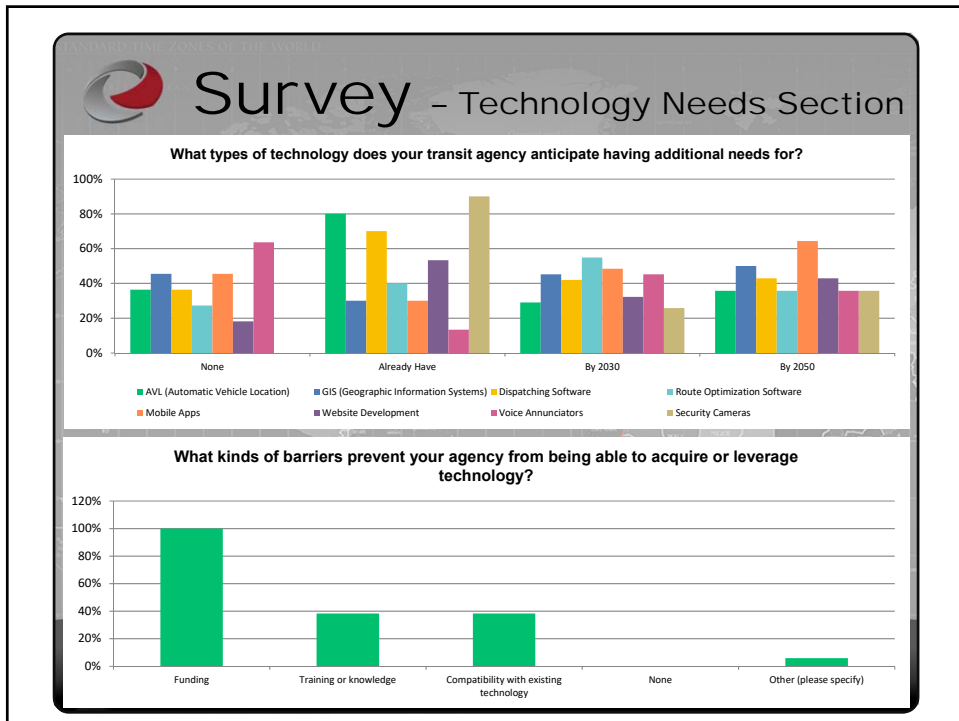
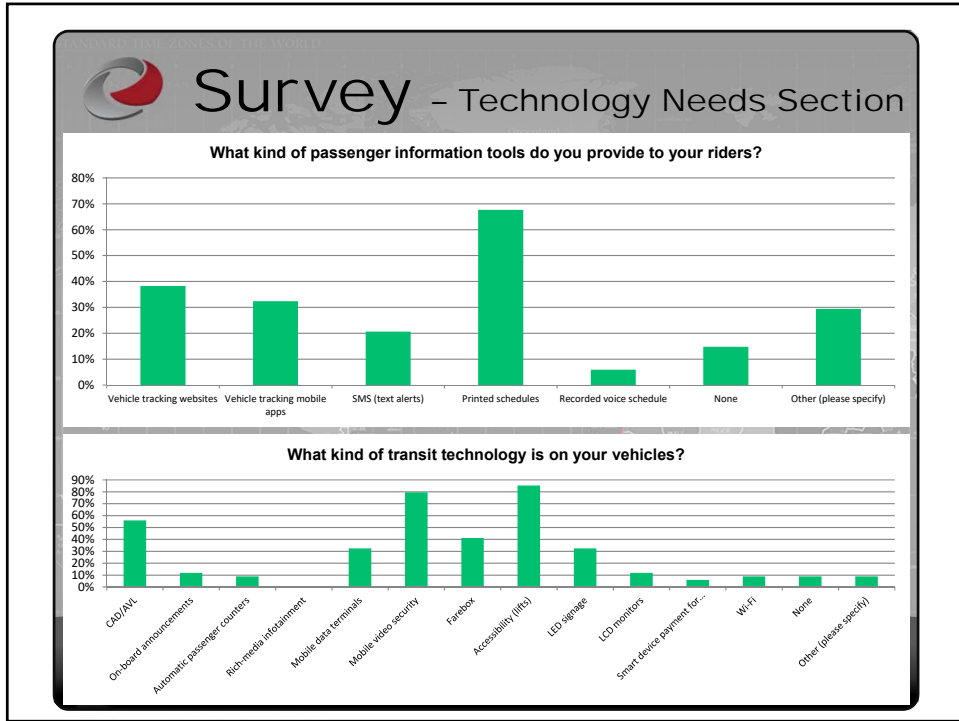
Ch. 5 - Implementation and Evaluation	
5.1. How will this plan be implemented?	
5.2. How will the plan implementation be evaluated?	
5.2.1. Implementation performance measures	
5.2.2. System performance measures	
5.3. Next Steps	
5.3.1. Future studies	
5.3.2. Marketing	
5.3.3. Outreach	











**Next**

- ▶ **Chapter's 1 & 2**
  - ▶ Introduction and Background
    - ▶ Demographics
    - ▶ Transportation Systems
- ▶ **Chapter 3**
  - ▶ Needs Analysis
    - ▶ Identify needs, gaps, etc.
    - ▶ Input for financial analysis
  - ▶ Strategies
    - ▶ Strategy identification
- ▶ **Chapter 4**
  - ▶ Financing
    - ▶ Output from Needs Analysis
    - ▶ Other sources

**IOWA DOT**  
 SMARTER | SIMPLER | CUSTOMER DRIVEN  
SMARTER | SIMPLER | CUSTOMER DRIVEN

Contact Us:  
 P. 515.239.1771 / joseph.drahos@iowadot.us

**THANK YOU**  
 FOR YOUR ATTENTION

**References:**  
 1999 Iowa In Motion Transit Plan  
 2009 Iowa Statewide Passenger Transportation Funding Study ([https://iowadot.gov/transit/regulations/Exec\\_Summary\\_Final\\_12-15-09.pdf](https://iowadot.gov/transit/regulations/Exec_Summary_Final_12-15-09.pdf))  
 2014 Iowa Park and Ride System Plan (<https://iowadot.gov/iowainmotion/files/StatewideParkandRideSystemPlanFINAL.pdf>)  
 2018 Iowa DOT Transit Asset Management Group Plan (<https://iowadot.gov/transit/publications/TransitAssetManagementGroupPlan.pdf>)

**IOWA DOT**  
 SMARTER | SIMPLER | CUSTOMER DRIVEN  
SMARTER | SIMPLER | CUSTOMER DRIVEN

Contact Us:  
 P. 515.239.1771 / joseph.drahos@iowadot.us