


## Asset Management Updates

1. TAM Requirements and DOT update
2. Pavement & Asset Data

Matt Haubrich  
Transportation Asset  
Management Administrator



## TAM Requirements

- Each state DOT is now required to have an asset management plan for the National Highway System (NHS).
  - Answers questions like: What do we have? What condition is it in? and How do we plan to manage it to get the most life at the least cost?
- We're required to plan for the entire NHS, including pavements and bridges owned by local agencies.
  - Since the DOT doesn't directly manage or invest in those, we point to our support for IPMP and local data collection to show good stewardship.
- MPOs are required to show how they're supporting the State's TAM.

## TAMP Status

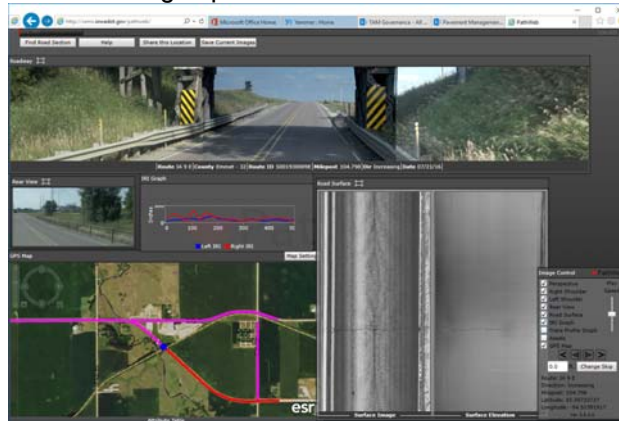
- Iowa DOT has completed two TAM Plans, one pre-dating the FHWA requirements (2016) and the second intended to meet the “Initial” TAM Plan FHWA requirements.
- Currently working on our “Full” TAM, which has additional requirements for Life Cycle Planning, Financial Planning, and Risk Management. Due June, 2019.
- We are required to show consistency of STIP with TAM Plan. Working on how we’ll do that.
- TAM and PM Documents are on the Iowa DOT Systems Planning web site:  
[https://iowadot.gov/systems\\_planning/planning/federal-performance-management-and-asset-management](https://iowadot.gov/systems_planning/planning/federal-performance-management-and-asset-management).

## Other TAM Updates

- Required to review all public roads for cases where the same location has had repeated repairs using federal dollars (23 CFR 667).
  - Must complete this evaluation by November, 2020.
- Mark your calendars for the TRB 13<sup>th</sup> National Asset Management Conference in Boston. July 13 - 15, 2020!

## Pavement Data

- Access
  - IPMP
  - Pathweb: <http://rams.iowadot.gov/pathweb/>



## Pavement Data Collection

- The DOT has been covering the cost to collect all pavement condition data since 2013. Includes videolog and asset extraction tools.

System	Cycle Miles	Per Mile	Cycle Cost (2yr)
Interstate (done every year)	1,942.0	\$ 55.60	\$ 215,950
Primary NHS - every other year	6,044.2	\$ 56.29	\$ 340,226
Non-Primary NHS - every other year	147.0	\$ 56.29	\$ 8,275
Non NHS Primary - every other year			
Urban	354.9	\$ 97.90	\$ 34,744
Rural	3,538.6	\$ 92.00	\$ 325,552
Local System FFC 2-6 (Collectors & Arterials)			
City	3,000.3	\$ 97.90	\$ 293,728
County	17,133.5	\$ 92.00	\$ 1,576,280
Other - urban	12.4	\$ 97.90	\$ 1,212
Other - rural	12.4	\$ 92.00	\$ 1,138
Local System FFC 7 (local streets)			
City	11,236.9	\$ 95.61	\$ 1,074,359
County	1,930.6	\$ 98.10	\$ 189,394
Other - urban	174.0	\$ 95.61	\$ 16,633
Other - rural	338.4	\$ 98.10	\$ 33,196
	<b>47,807.0</b>		<b>\$ 4,110,687</b>

