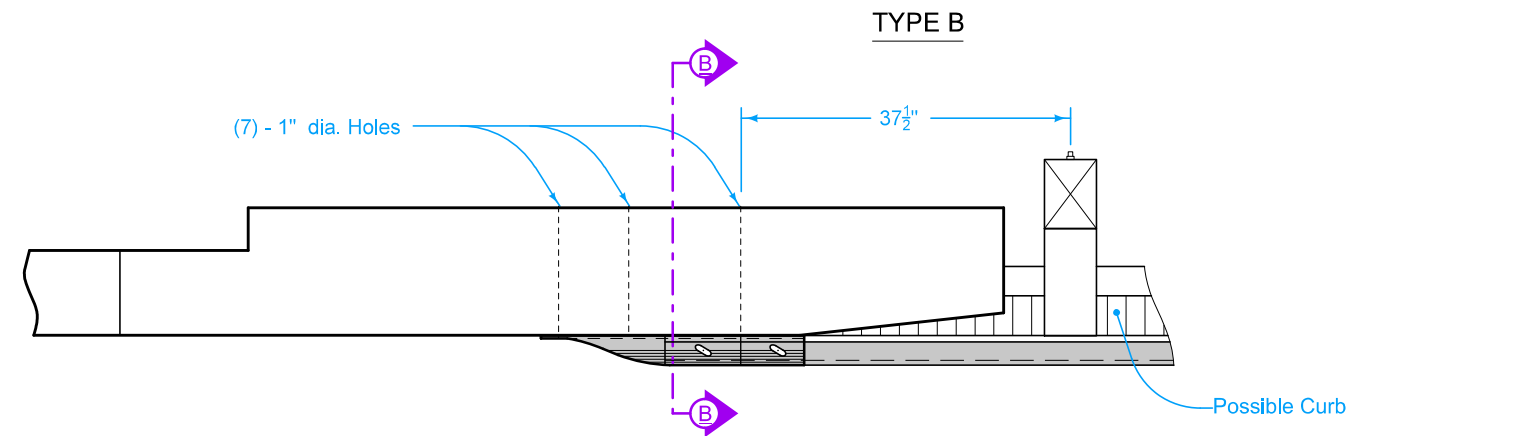


- ① See BA-201.
- ② BTS post # 14 BA-201. BTS post #5 BA-221.
- ③ Lap the Terminal Connector on the outside of the nested thrie beam rails for attachments on the trailing end of a bridge.

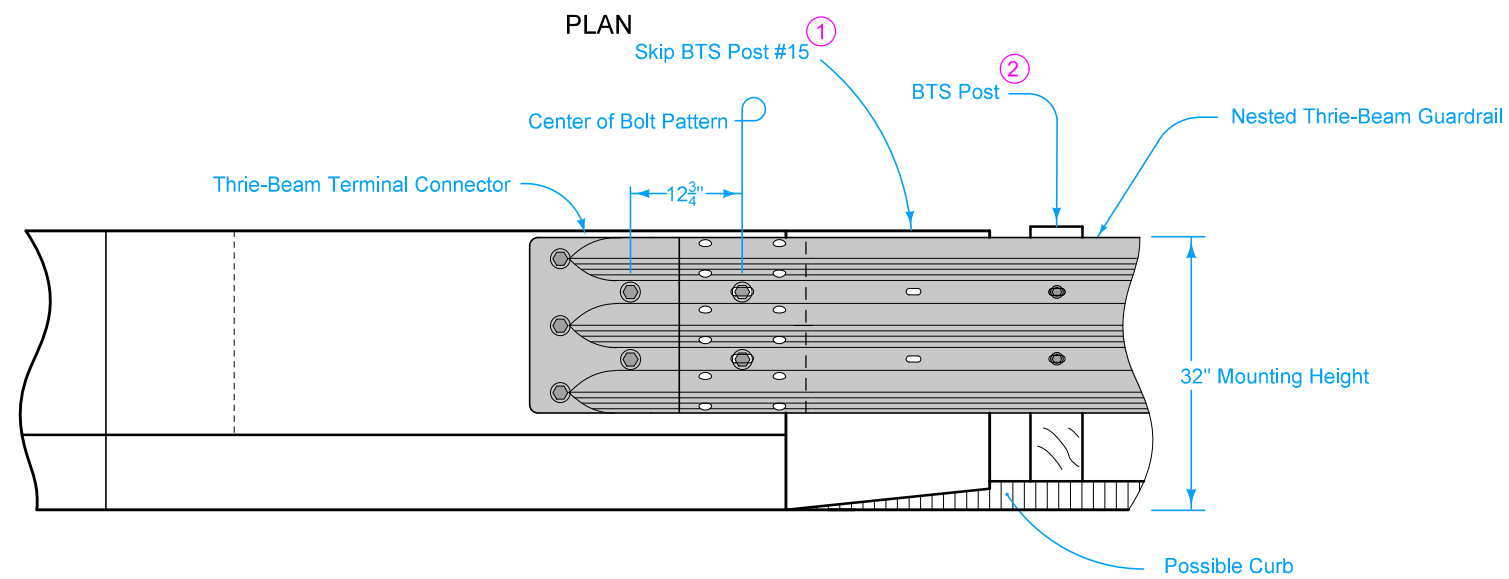
Possible Contract Item:
Steel Beam Guardrail End Anchor, Bolted

Materials included in the Contract Item:
Thrie-Beam Terminal Connector
Approved 7/8" x sufficient length Hex Bolts
Approved 7/8" Hex Nuts
Approved 15/16" Washers

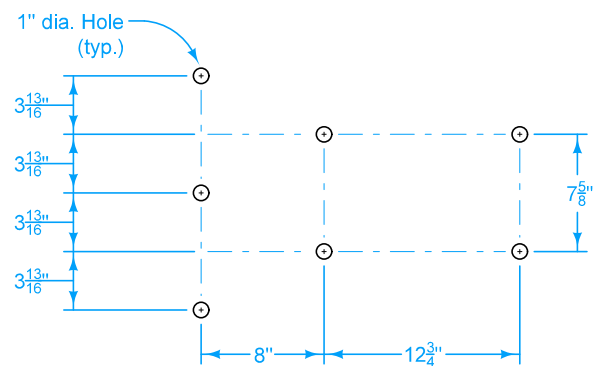
 STANDARD ROAD PLAN	REVISION	
	5	10-15-24
BA-202		
SHEET 1 of 4		
REVISIONS: Added Type 'D'.		
 APPROVED BY DESIGN METHODS ENGINEER		
STEEL BEAM GUARDRAIL BOLTED END ANCHOR		



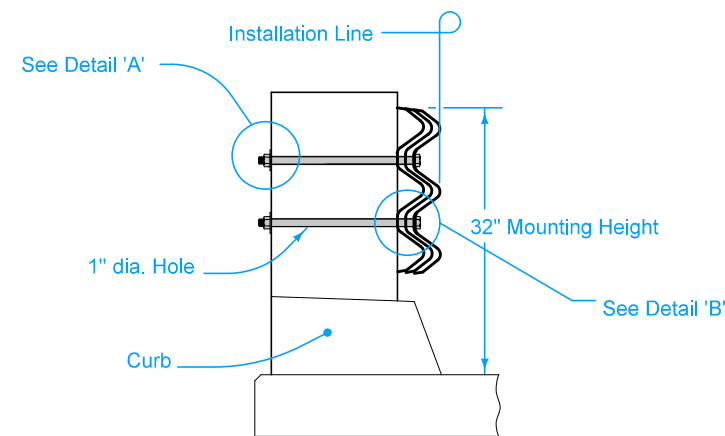
- ① See BA-201.
- ② BTS post # 14 BA-201. BTS post #5 BA-221.



ELEVATION



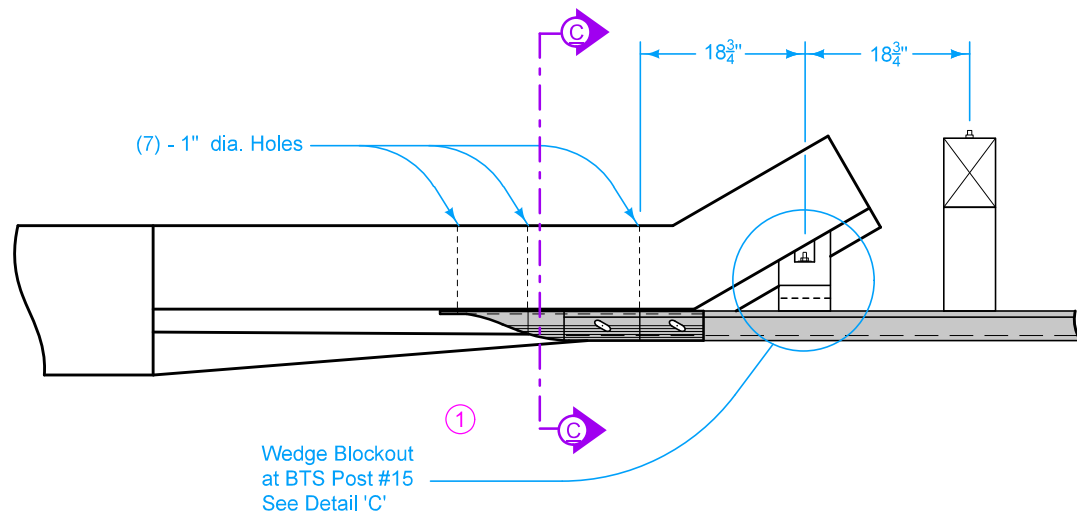
7 - BOLT PATTERN
Thrie - Beam Terminal Connector



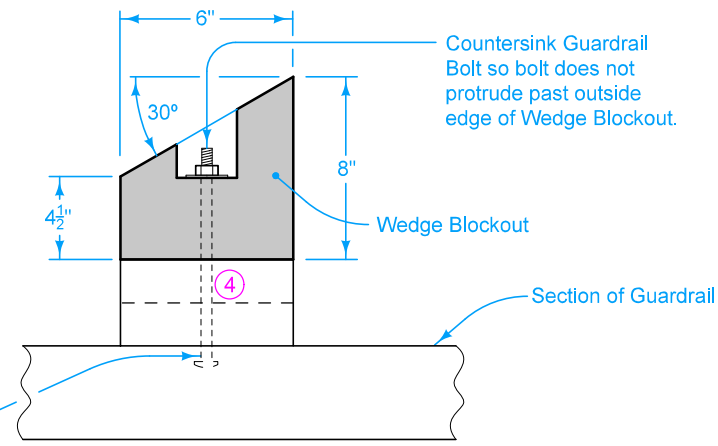
SECTION B-B

 STANDARD ROAD PLAN	REVISION	
	<table border="1" style="width: 100%; border-collapse: collapse;"> <tr> <td style="width: 50%; text-align: center;">5</td> <td style="width: 50%; text-align: center;">10-15-24</td> </tr> </table>	5
5	10-15-24	
BA-202		
SHEET 2 of 4		
REVISIONS: Added Type 'D'.		
 <small>APPROVED BY DESIGN METHODS ENGINEER</small>		
STEEL BEAM GUARDRAIL BOLTED END ANCHOR		

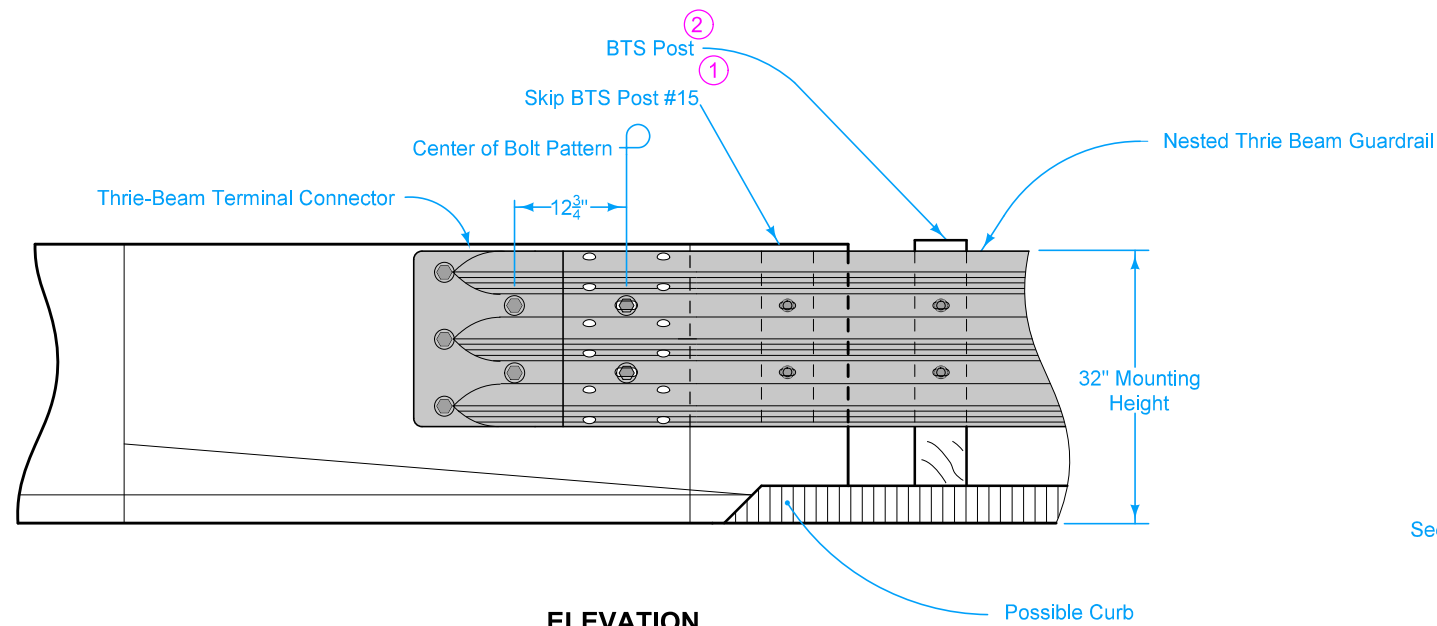
TYPE C



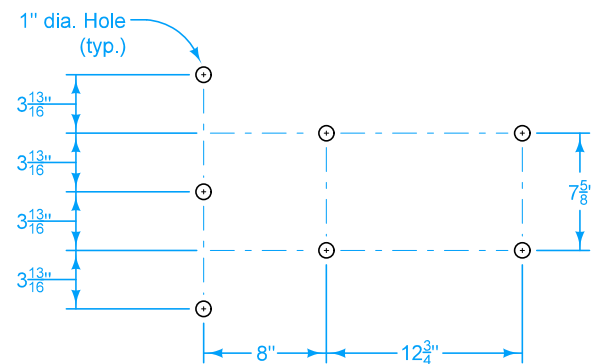
PLAN



DETAIL 'C'

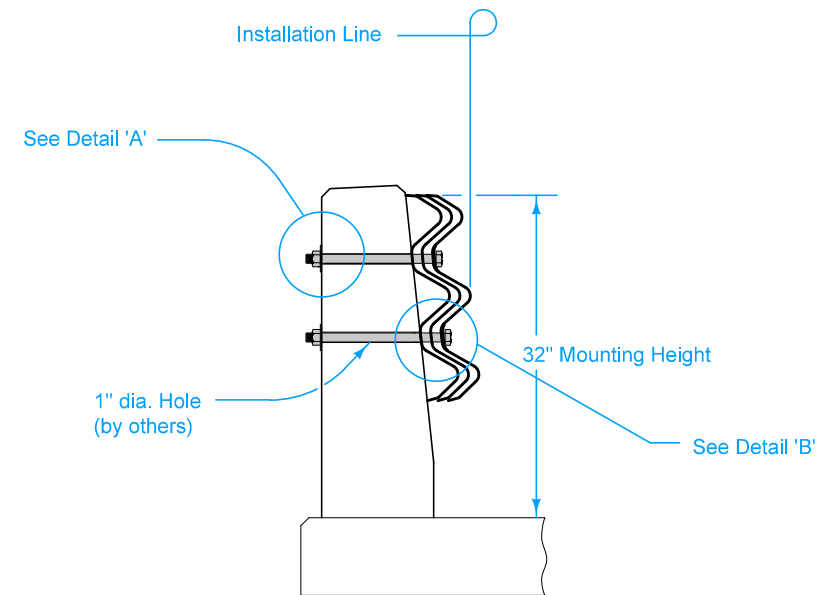


ELEVATION



7 - BOLT PATTERN

Thrie - Beam Terminal Connector



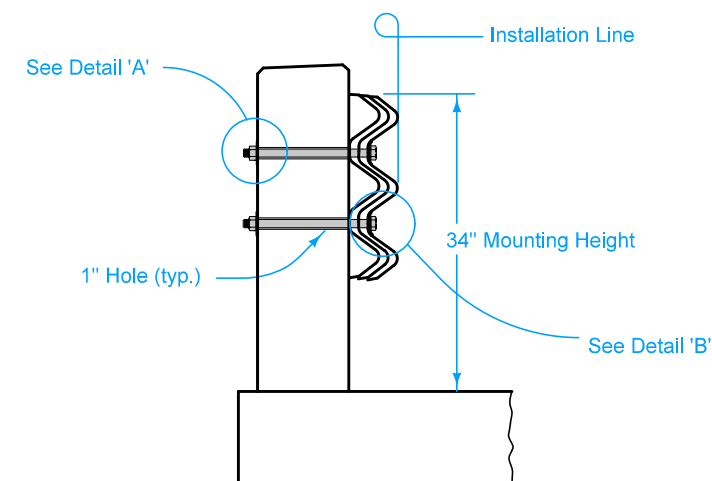
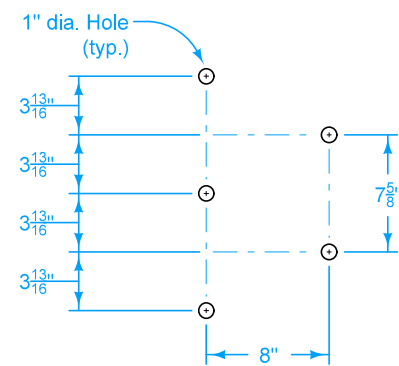
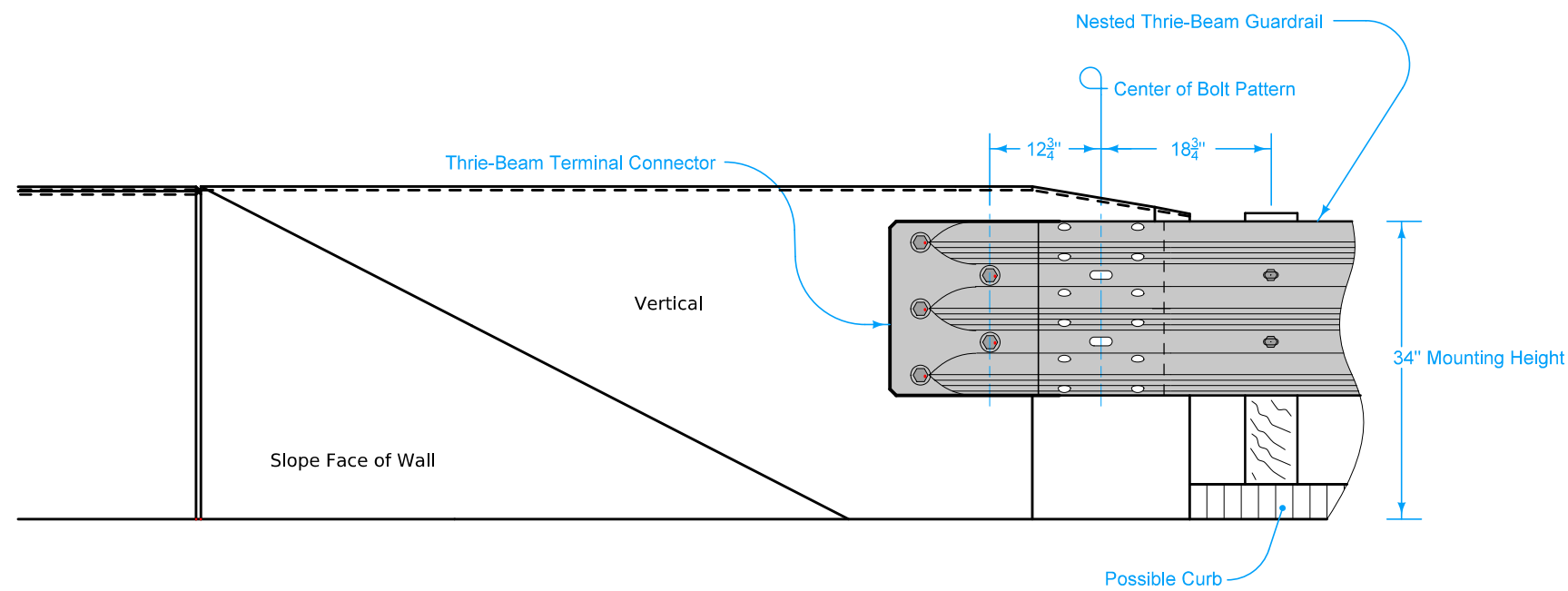
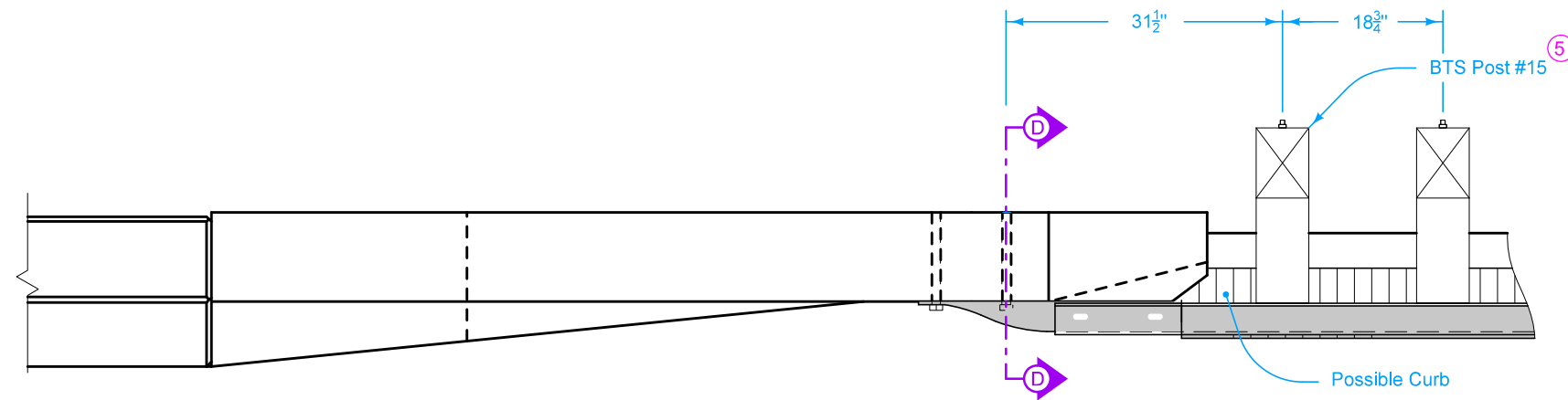
SECTION C-C

- ① See BA-201.
- ② BTS post # 14 BA-201. BTS post #5 BA-221.
- ④ Use treated spacer boards (1 in. x 6 in. or 2 in. x 6 in.) to produce a tight fit between the wedge blockout and endpost. A nominal 1 inch gap is acceptable. Spacer boards are incidental to bolted end anchor.

 IOWA DOT	REVISION	
	4	10-15-24
STANDARD ROAD PLAN		BA-202
		SHEET 3 of 4
REVISIONS: Added Type 'D'.		
 APPROVED BY DESIGN METHODS ENGINEER		
STEEL BEAM GUARDRAIL BOLTED END ANCHOR		

TYPE D

5 See BA-209.



	REVISION	
	5	10-15-24
STANDARD ROAD PLAN		BA-202
REVISIONS: Added Type 'D'.		SHEET 4 of 4
 APPROVED BY DESIGN METHODS ENGINEER		
STEEL BEAM GUARDRAIL BOLTED END ANCHOR		